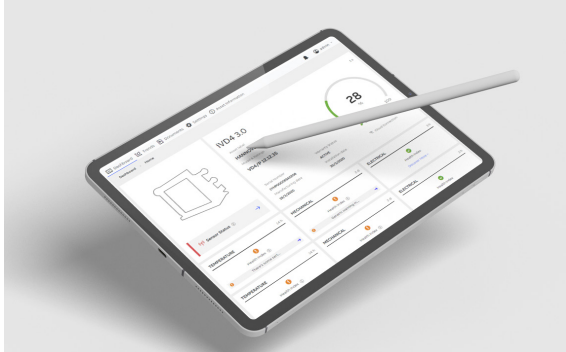


AREAS OF EXPERTISE

**Web**

**Software** *beyond expectations*

## Industrial Device Monitoring

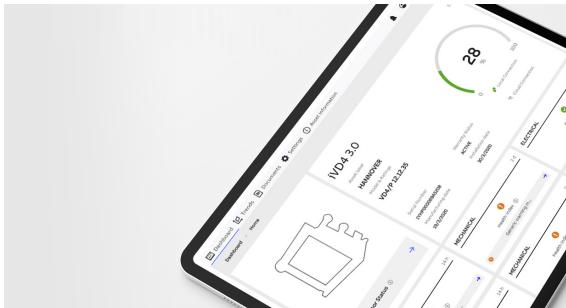


For a leading multinational in the energy sector, we developed an advanced Web HMI for monitoring and diagnosing industrial switches. Our solution features a user interface composed of dynamic widgets, configured through a specific file. This approach allows the application to support different switches without requiring code modifications, ensuring maximum flexibility and operational efficiency.

**4** Supported Devices

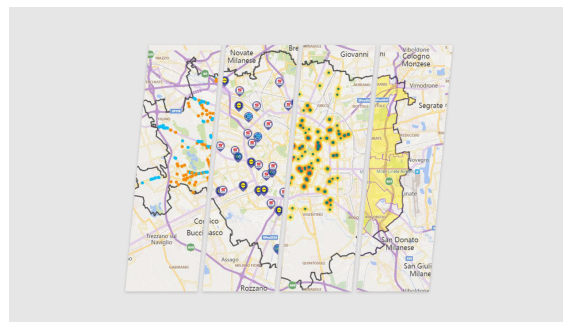
**3** User Levels

**1** Configuration File



## Interactive Maps

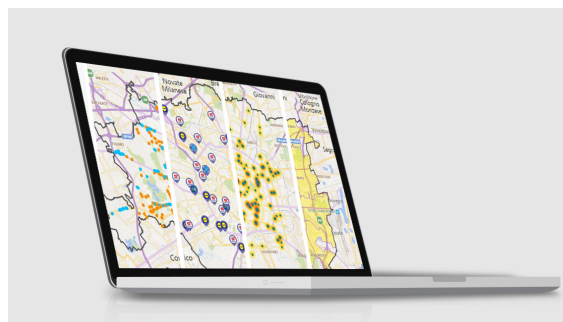
For a multinational in the communication sector, we completely rewrote a web portal for planning and accounting advertising campaigns based on territories and population. Special care was given to defining user segmentation and reporting.



**4** Types of Maps

**91** Cities and Municipalities

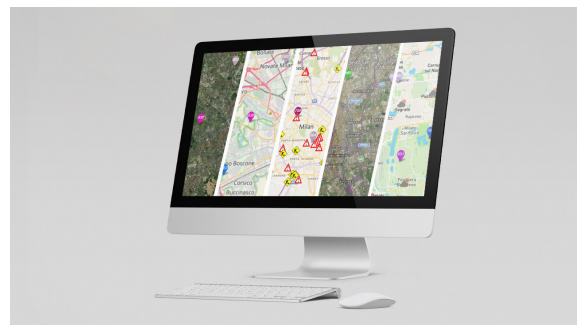
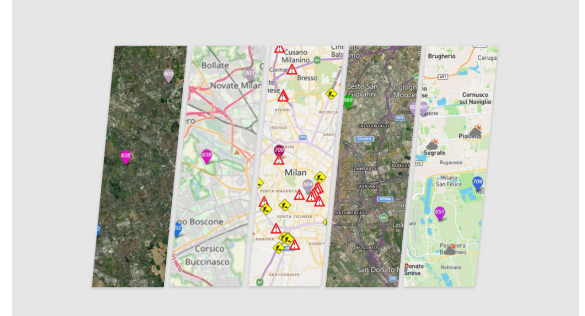
**12** Million Records Imported Per Day



## Fleet Vehicle Monitoring

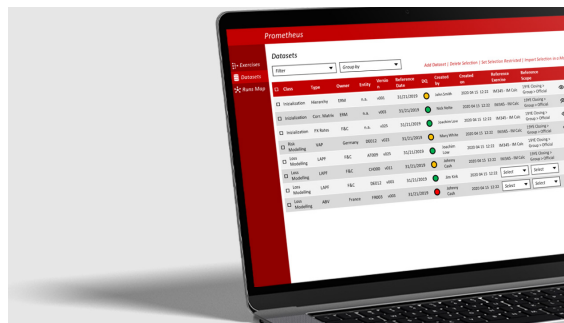
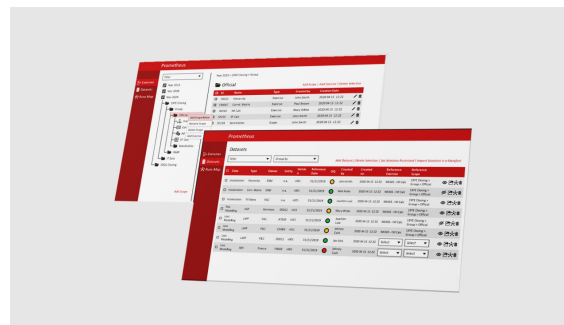
- 5** Types of Maps
- 2** Interactive Features
- 30** Diagnostics Data Displayed

For a multinational active in the automotive sector, we developed a web platform that enables real-time monitoring of fleets and drivers, providing geolocation, telemetry, diagnostics, and event information. The solution was complemented with an efficient ticketing system and personalized notifications.



## Risk Calculation Platform

For a major insurance company, we supported the development team in creating an advanced platform for risk calculation. The developed web app allows the uploading of large files, their validation through a customized Data Quality system, and the subsequent availability of this data to a powerful calculation engine.



- 6** Dataset Types
- 2** Analysis Types
- 1** Matrix User Hierarchy

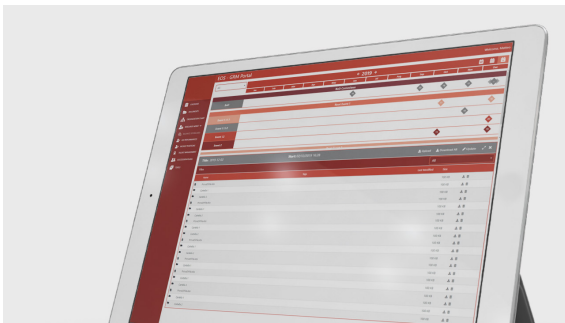
## Top Management Platform



For an insurance company, we collaborated with the development team to create a web app for top management. Its main functionality includes a calendar of key events with an integrated document-sharing system. The platform allows for the management of internal resources, including balance scorecards, KPIs, talent, and vacant position management, as well as enabling the dynamic definition of the company's organizational chart.

**5** **User Levels**

**4** **Types of Events**



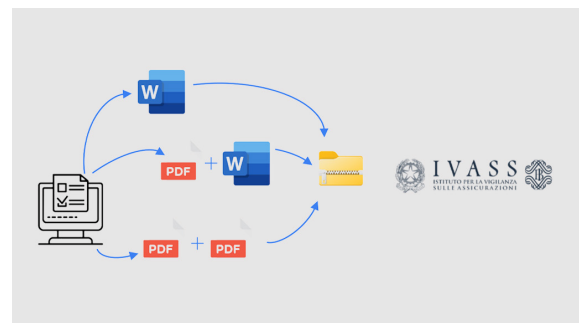
## Document Processing

**12** **Managed Countries**

**6** **Document Management Flows**

**3** **User Hierarchies**

For a multinational insurance company, we contributed to the development of a platform intended for the Group Chief Risk Officer and foreign offices. This web-app allows for the generation and management of documents for IVASS (Italian Institute for the Supervision of Insurance), offering upload functionality, version management, and definition of metadata to include in covers.



## Process management portal

BindingFuture has contributed to developing a modular and customizable platform for managing processes in the insurance and financial sectors.

The platform is configurable according to the needs of the end customer, allowing management of different types of information based on the context of use.

Using Keycloak as a centralized identity manager allows integration of Single Sign-On authentication with various providers (e.g., Microsoft, Google).

